

A.M. Bauyedimova, M.B. Dautova, S.O. Osikbayeva
*Asfendiyarov Kazakh National medical university,
 Department of normal physiology with a valueology course*

HYGIENIC ASSESSMENT OF THE CURRENT STATE AND DETAILED PLANNING OF THE ITEM BOBROVKA

In article questions of influence of social conditions on the population and development of the actions directed to preservation of health and creating favorable conditions for accommodation in the settlement are considered. And also consideration of the project of expansion and the reconstruction operating and constructions of new water supply systems, construction of objects of health care, general education and cultural and community objects.

Keywords: *hygiene, population, planning of the territory, water supply, water disposal.*

Introduction.

History convincingly demonstrates that the main achievements of a civilization were bound to process of an urbanization [1]. Public administration by development of urban areas includes as development of the urban policy defining the choice of strategic and tactical targets of territorial development, and creation of organizational and legal conditions for achievement of these purposes, including development of normative bases, i.e. documents of territorial scheduling [2]. Territorial scheduling is necessary for formation of the urban environment which would be favorable for comfortable activity of the population, development of social and economic development of the city. Planning of the territory – one of kinds of town-planning activity which is carried out, as a rule, on the basis of the approved schemes of territorial scheduling of areas or master plans of settlements or city districts. Body height of the cities and the population odnovrekmenno generates also the mass of environmental, social, economic and other problems that assumes application of a complex podkhokd in a research of problems of an urbanization. Now the urban population grows quicker, than infrastructure develops. In Poslakniya Prezident of the Republic of Kazakhstan it is told to the people about need to provide dinakmichny development of infrastructure [3]. Level of the state of health of the people, in turn, defines a measure of social and economic, cultural and industrial development of the country. According to the State program of "Salamatty Kazakhstan" for 2011-2015, from the point of view of steady and stable body height of welfare of the population the branch of health care representing the uniform developed, socially oriented system designed to provide availability, timeliness, quality and continuity of delivery of health care is one of the main priorities in the Republic of Kazakhstan [4]. Logical continuation of this strategy is the State program of development of health care of the Republic of Kazakhstan "Densaulyk" 2016-2020 which is created for strengthening of health of the population on the basis of ensuring sanitary wellbeing, prophylaxis of risk factors, promotion of a healthy delivery and inducing of a healthy lifestyle [5]. In communication from above studying and the analysis of the project of detailed planning on the example of the developing settlement of Bobrovka is specified by a research objective, to give the hygienic characteristic.

Materials and methods.

In work analytical and laboratory types of a research research types were used descriptive. For carrying out a research the project of the settlement was considered. To the solution of carrying out reconstruction and new construction, the settlement had the status of the country massif. The analysis of the current state of the settlement on the basis of results of reports of RGU "Semeysky Municipal Government of Consumer Protection" is carried out. Reconstruction of the inhabited places, construction of the new cities and settlements are carried out according to master plans and projects of building.

Results and discussion.

City scheduling includes well thought over water handling and sewerages, and also systems of public transport and health care. The strategy of development for the city, i.e. statement is more whole taking into account conditions in this or that region. In a master plan this territory is considered as the area of individual building. The territory of the item Bobrovka is located in a northwest part of the city, on the left-hand river bank Irtys. From the North the designed territory adjoin the country massif, from East side – the country massif and the settlement Western. From South side the western industrial hub is located. The considered territory is built up partially. The existing housing stock is presented by individual houses with personal plots. In the territory of the settlement there are free territories which can be used for construction. But on engineering-geological conditions the considered territory is adverse for construction. The existing pits on extraction of sand are offered to be recultivate, arranged well and used as a recreational zone. Quarters of new farmstead building are planning coordinated to the existing building and other districts of the city by network of turnpike and inhabited streets. So, on the center of the designed territory trace of the turnpike street which will connect this area with a right-bank zone of the city is provided.

Table 1 - Research of exemplars of the soil

Name of indexes	unit of measure	Norm on ND	Result of a research
1	2	3	4
Point No. 1			
QMAFAM	CFU/g	-	Are not found
BGC	g	Not less than 1,0	Are not found
Cl, perfringes	g	Not less than 1,0	Are not found
Thermophiles	CFU/g	Not less than 0,01-0,001	Are not found
Pathogenic including salmonellas	g	In 50 g it is not allowed	Are not found

Point No. 2			
QMAFAM	CFU/g	-	Are not found
BGC	g	Not less than 1,0	Are not found
Cl, perfringes	g	Not less than 1,0	Are not found
Thermophiles	CFU/g	Not less than 0,01-0,001	Are not found
Pathogenic including salmonellas	g	In 50 g it is not allowed	Are not found
Point No. 3			
QMAFAM	CFU/g	-	Are not found
BGC	g	Not less than 1,0	Are not found
Cl, perfringes	g	Not less than 1,0	Are not found
Thermophiles	CFU/g	Not less than 0,01-0,001	Are not found
Pathogenic including salmonellas	g	In 50 g it is not allowed	Are not found

From subjects to service there are a school and shops located in northeast sides of the area. According to analyses of reports Republican Public Institution "Semeysky municipal government of consumer protection" security with health care facilities and educations in the settlement of Bobrovka for 2015, data are presented in the chart 1.

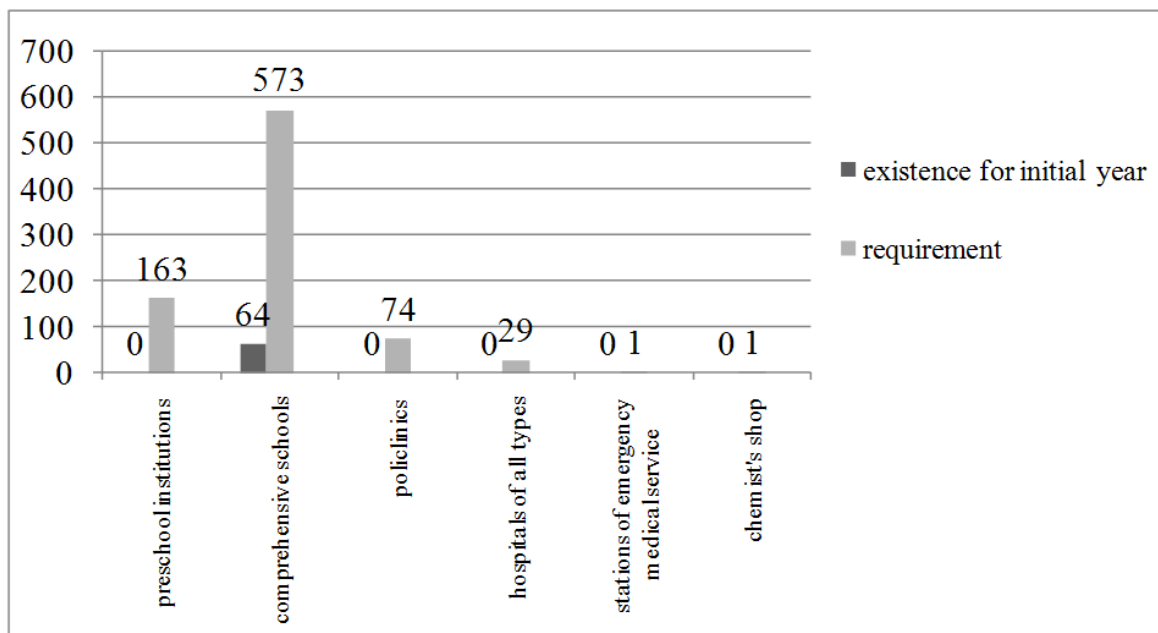


Chart 1- Security with objects of education and health care of the item of Bobrovka for 2015

From the chart 1 it is possible to draw a conclusion that at the moment the population of the settlement needs health care facilities (polyclinic, hospitals of all types, stations of emergency medical service, a drugstore) and objects of education (preschool institutions, comprehensive schools). In the territory of the settlement there is a school, but the number of places not sufficient for tutoring of children. As earlier the settlement had the status of the country massif construction of schools was not calculated on perspective body height of the population.

For the organization of a full-fledged cultural and community upkeep of the population construction of the following objects is provided: 3 kindergartens on 163 places, 2 comprehensive schools on 1200 places, 1 hospital of all types on 29 beds, 1 polyclinic of-74 visits per shift, a drugstore-1 object that corresponds to the health regulations shown to health care facilities and educations.

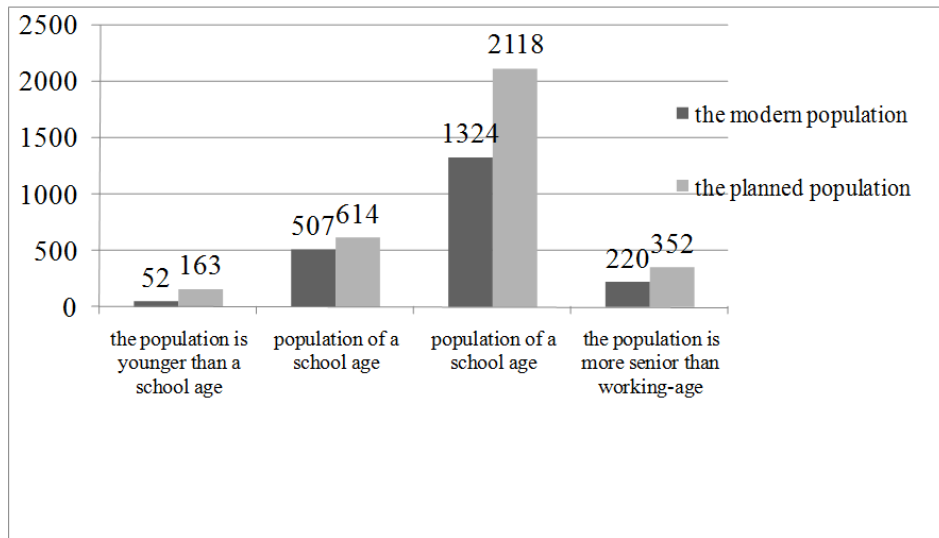


Chart 2 - Population of the item of Bobrovka for 2015 and the planned population for 2020

The population of the settlement at the moment makes 1905 people, perspective body height of the population will make 3247 people. For definition in the designed territory of normative number of places the age structure of the population is given in institutions of preschool education and general education institutions and capacity of other objects of services industry in the chart 2.

As a source of water supply of the designed territory underground waters are used. Island "Freedom", Island "Big" and Island of "Bow".

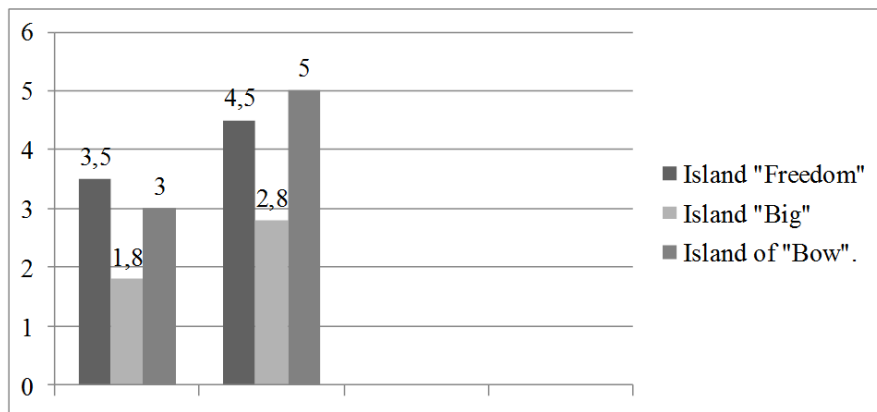


Chart 3 - Average annual levels of underground waters 2014 and 2015 of Semey

Connection of the projected zone to the existing city networks is provided. At this stage in the territory of the settlement the central water handling and water disposal is not provided, the population uses water from wells.

In the considered area the central sewerage is absent, in each yard outdoor toilets without waterproof cesspools are equipped. The project provides the all-floatable centralized system of the sewerage from residential and public buildings.

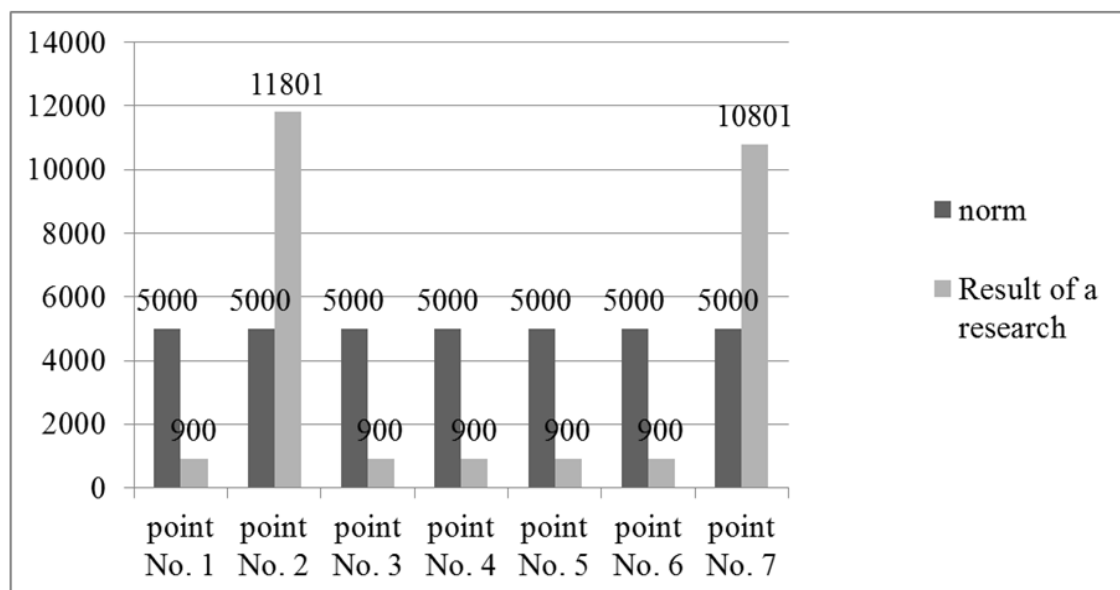


Chart 4 - Microbiological research of water of 2015 of the item of Bobrovka

Conclusions.

When carrying out researches it is established that the current state of the settlement of Bobrovka corresponds to the status of the country massif. Tells lack of infrastructure, health care facilities and education about it. Lack of the centralized water handling and water disposal that in turn, constitutes danger to the state of health of the population and threat of epidemiological safety.

For creation of the modern, convenient, ecologically safe area the project of detailed planning is offered to be carried out in the following directions including a number of planning, technological and organizational actions:

- uses in the modern architectural and planning and volume and space solutions of building of the traditional forms providing culturological continuity and identity of building;
- providing population with a complex of social facilities, including child care preschool, educational and medical institutions;
- formations of complete system of a street road network with a punched hole of new highways and inhabited streets;
- recultivation of the existing pit on extraction of sand and the organization of a recreational zone;
- holding actions for protection and improvement of a surrounding medium;

Construction of facilities of health care and subjects to household appointment, the organization of venues of leisure, including construction of sports constructions, will promote improvement of quality of life and health of the population.

REFERENCES

- 1 R.S. Paul Share of urban population in the total number of the population // The United Nations Department of Economic and Social Affairs. - 2011. - P. 11-14.
- 2 Anikeev V. V. Town-planning scheduling of development of territories - whether to be to it in Russia? // Urgent socially - economic problems of development of the cities of Russia. Collection of scientific articles // PAACH. - 2004. - P. 62-69.
- 3 The concept on inclusion of Kazakhstan into number of 30 most developed states of the world. It is approved by the Decree of the President of the Republic of Kazakhstan. - 2014. - 732 c.
- 4 The state program of development of health care of the Republic of Kazakhstan "Densaulyk" for 2016-2020
- 5 The state program of development of health care of the Republic of Kazakhstan "Salamatty Kazakhstan" for 2011 - 2015

А.М. Бауедимова, М.Б. Даутова, С.О. Осикбаева

*С.Ж. Асфендияров атындағы Қазақ Ұлттық медицина университеті,
Валеология курсымен қалыпты физиология кафедрасы*

БОБРОВКА КЕНТІНІҢ УАҚЫТТАҒЫ ЖАҒДАЙЫНА ЖӘНЕ НАҚТЫ ЖОСПАРЛАМАСЫНА ГИГИЕНАЛЫҚ БАҒАЛАУ

Түйін:Мақалада әлеуметтік жағдайлардың тұрғындарға әсер ету және елді мекенде денсаулықты сақтауға және тұруға жағымды жағдайлар құруға бағытталған шараларды құру сұрақтары қарастырылады. Сонымен қатар, іске қосылған және жаңа су құбырларының құрылысы, денсаулық сақтау, жалпы білім беру және мәдени – тұрмыстық нысандарын салу бойынша кеңейту және реконструкциялау жобалары қарастырылады .

Түйінді сөздер: гигиена, халық,аумақтың жоспарлауы, сумен қамту, кәріз

А.М. Бауедимова, М.Б. Даутова, С.О. Осикбаева
*Казахский Национальный медицинский университет имени С.Д. Асфендиярова,
Кафедра нормальной физиологии с курсом валеологии*

**ГИГИЕНИЧЕСКАЯ ОЦЕНКА СОВРЕМЕННОГО СОСТОЯНИЯ И
ДЕТАЛЬНОЙ ПЛАНИРОВКИ П. БОБРОВКА**

Резюме: В статье рассматриваются вопросы влияния социальных условий на население и разработка мероприятий, направленных на сохранение здоровья и создание благоприятных условий для проживания в населенном пункте. А также рассмотрение проекта расширения и реконструкции действующих и строительства новых водопроводов, постройка объектов здравоохранения, общеобразовательных и культурно-бытовых объектов.

Ключевые слова : гигиена, население, планировка территории, водоснабжение, водоотведение.